

Ranger™ DXi series

Get reach. Get performance. Get connected.



Table of content

1. It's all covered	3
2. Features for the job	4
3. Get reach	6
4. Get connected	8
5. Get performance	10
5.1 RD900 series rock drills	11
5.2 CT55 and CT67 drilling tools	12
6. Features for smarter drilling	14
6.1 Optional features and equipment	14
6.1 Technical features	15



It's all covered

For over 30 years, the Ranger™ DXi series by Sandvik has worked hard in countless sites, earning it a reputation of versatility and performance. The Ranger™ DXi series is the culmination of all the experience gathered over the years, taking top hammer drilling to a new level. Its **superior coverage** lets you do more drilling and less tramming. Its wide range of **powerful rock drills** makes it suitable for practically any application. Its new, sturdy and fast-mounting **rock tool options** mean more quality holes with less fuel. And its work-enhancing **digital tools** with powerful **connectivity features** make every working day smarter.

Whatever you need to do your job, the Ranger™ DXi family has it all covered – with versatility unlike anything else.

- Key features**
Hole diameter:
64–127 mm (2.5”–5”) / 89–140 mm (3 ½”–5 ½”)
Rock drill: 21 kW, 25 kW / 27 kW, 30 kW
Engine output: 185 kW / 210 kW
- Production drilling
 - Pre-split drilling
 - Foundation drilling
 - Road construction
 - Bolting
 - Pipeline drilling

Features for the job

Would you like to spend more time drilling and less tramming? Get more done with less fuel? Have more comfort and less noise? Whatever your job requires, the new Sandvik Ranger™ DXi series covers it.

Powerful rock drill

Selection of powerful RD900-series rock drills

iCab cabin

- Low noise level 73.5 dB
- Easy to use control panel
- Room for the trainer
- Good visibility and ergonomics
- Faster user interface with new display

Improved productivity

With the unique curved thread system rock tools up to 20% better penetration rates

- CT55 89–115 mm
- CT67 102–140 mm

Sandvik style of intelligence

- Tim 3D system with surface model support
- iTorque drilling control system
- Full cycle one-hole automatics

Connectivity

- My Sandvik Productivity
- My Sandvik Onsite
- Open drill interface
- Service light indicator
 - Drill plan transfer from My Sandvik
 - iEi display – faster user interface

More holes per set up

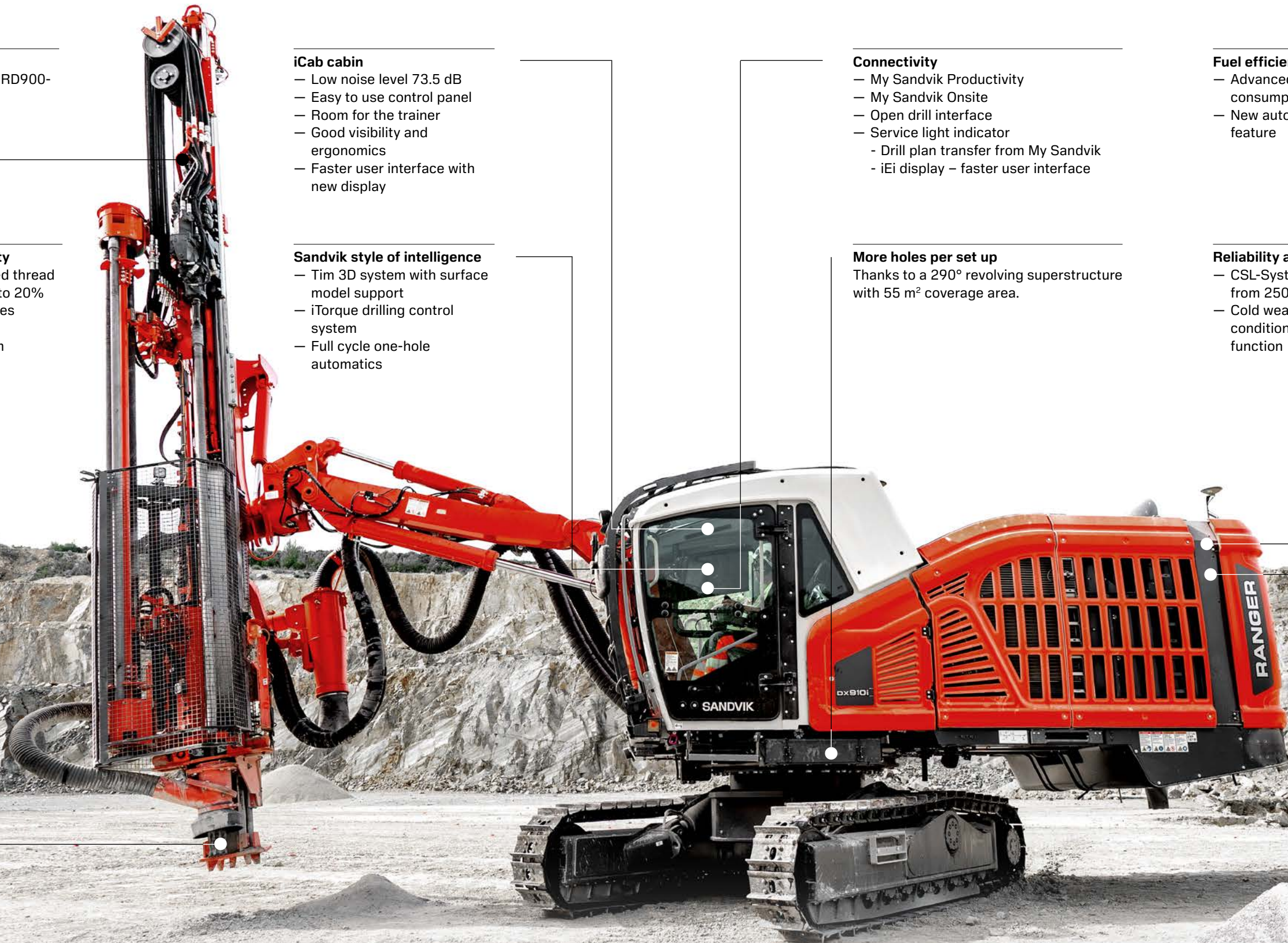
Thanks to a 290° revolving superstructure with 55 m² coverage area.

Fuel efficiency

- Advanced technology reduces fuel consumption up to –23%
- New automatic engine shutdown feature

Reliability and operating costs

- CSL-System service interval increased from 250 h to 500 h
- Cold weather kit for extreme conditions, including Rock drill heating function



Please note that some of the features are optional.

Get reach

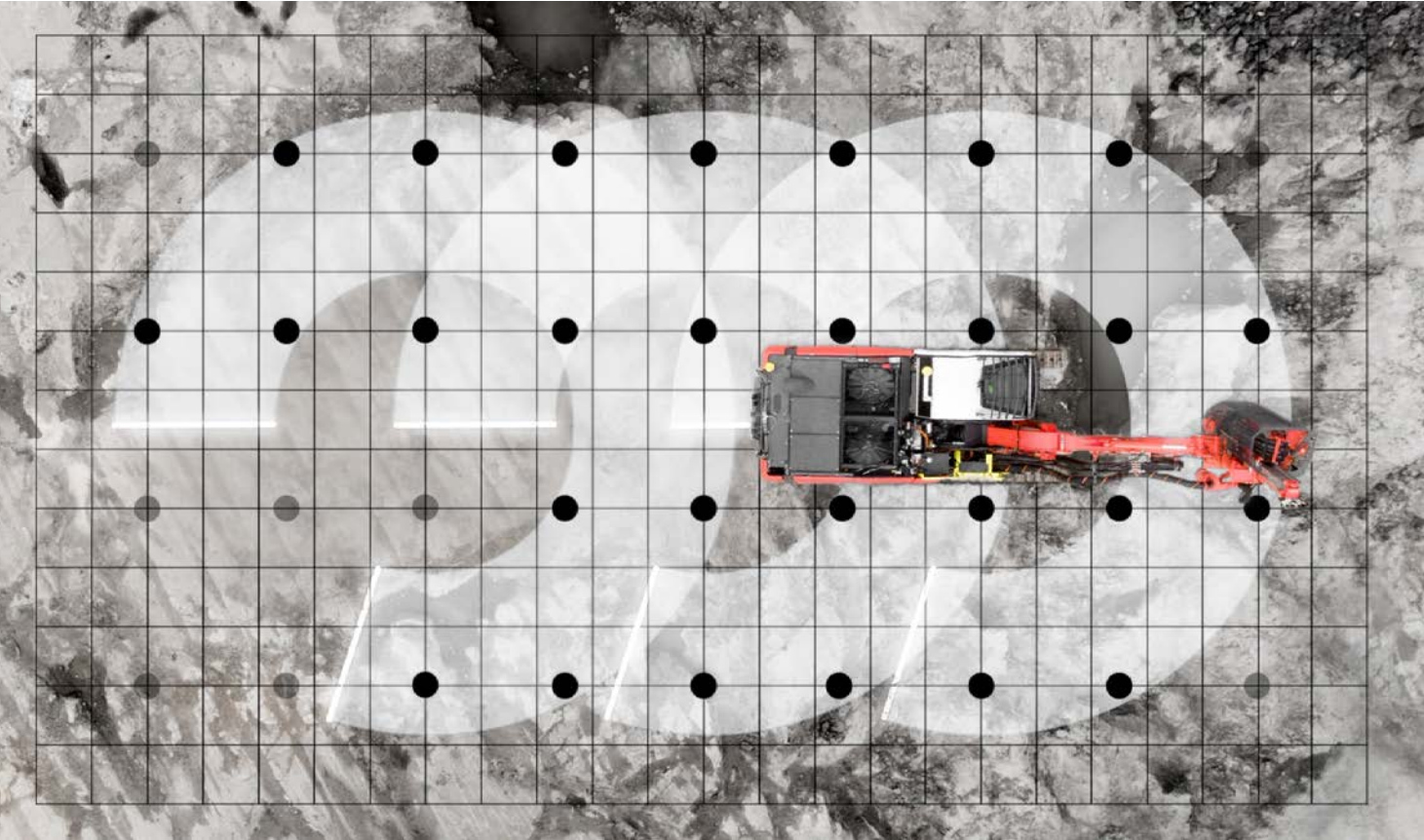
The revolving superstructure with 290° rotation enables coverage unlike anything else in the market – 55m². This means more holes with less tramming, and at the end of the day, more productive working days with up to 60 minutes more drilling in each shift.

Mobile but stable

The low center of gravity and high tramming power give the Ranger™ DXi rigs much-needed mobility. In challenging ground conditions, the rig keeps stable at all times thanks to the rotating carrier with the counterweight structure that maintains weight opposite the boom.

Makings of mobility

- 290-degree turning superstructure
- Powerful tramming
- Full radio remote control (option)
- Hydraulic winch (option)



290°

55m²



Get connected

Ranger™ DXi family's productivity is boosted by advanced connectivity features. Ranger™ DXi is compatible with **My Sandvik Productivity** and **My Sandvik Onsite** telematics solutions securing the equipment efficiency with detailed health and utilization data. Fleet performance can be monitored through easy-to-use dashboards, or by integrating with external systems through an API.

Open drill interface

Connect your Sandvik drill seamlessly to 3rd party navigation, telematics or fleet management systems

My Sandvik Productivity and My Sandvik Onsite

Secure productivity, efficiency and uptime with in-depth fleet data.

Get performance

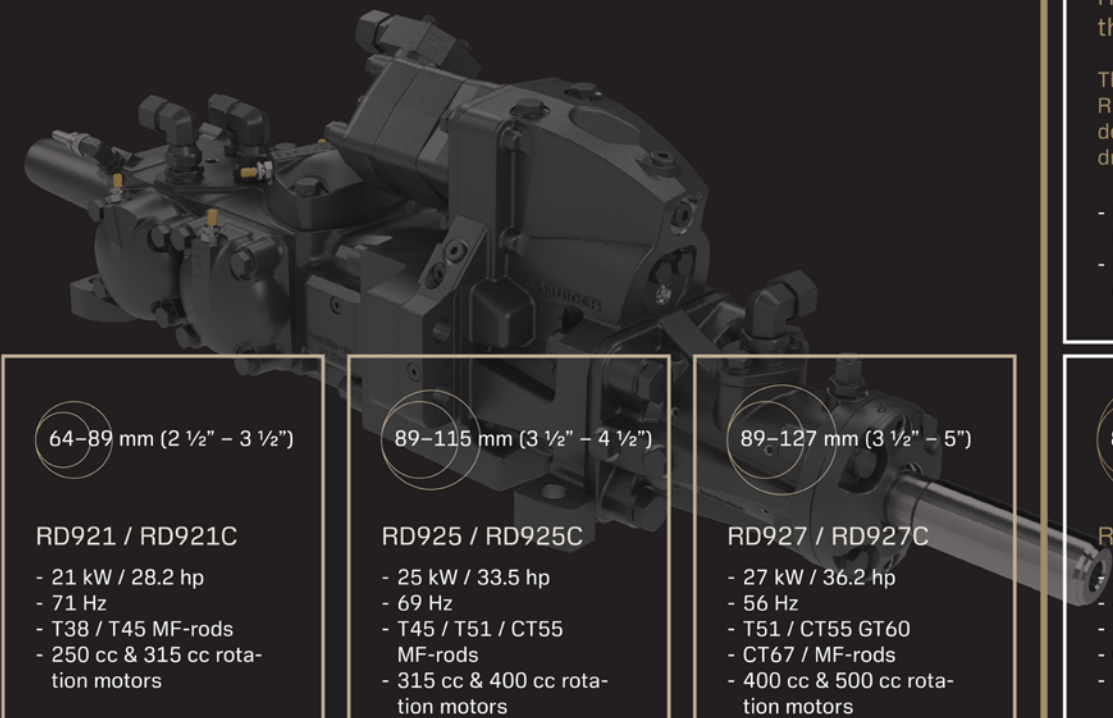
Rock drill is at the heart of your drill rig performance. Over the years, the trusted and powerful RD900 series has proven its value on countless sites and continues to power the Ranger™ DXi series.

As an even more powerful option we now offer the upgraded **RD930C rock drill**. It boasts an excellent penetration rate, enabling up to 15% better productivity with reduced fuel consumption. And the all-new **CT67** and **CT55 rock tools** transform all that power to straight holes, as their unique curved, shoulder-driven thread system gives a robust coupling. It perfectly matches the higher drilling power and still maintains low stress levels in critical thread sections.



RD900 series rock drills

The wide range of available equipment and rock drill options makes the Ranger™ DXi series customizable for different applications in civil contracting, quarrying and mining. The proven and powerful RD900 series rock drills have earned their trust among users, covering practically all needs and hole sizes in different applications.



64–89 mm (2 ½" – 3 ½")

RD921 / RD921C

- 21 kW / 28.2 hp
- 71 Hz
- T38 / T45 MF-rods
- 250 cc & 315 cc rotation motors

89–115 mm (3 ½" – 4 ½")

RD925 / RD925C

- 25 kW / 33.5 hp
- 69 Hz
- T45 / T51 / CT55 MF-rods
- 315 cc & 400 cc rotation motors

89–127 mm (3 ½" – 5")

RD927 / RD927C

- 27 kW / 36.2 hp
- 56 Hz
- T51 / CT55 GT60
- CT67 / MF-rods
- 400 cc & 500 cc rotation motors

89–140 mm (3 ½" – 5 ½")

RD930C

- 30 kW / 40 hp
- 46 Hz
- T51 / CT55 GT60
- CT67 / MF-rods
- 500 cc rotation motor

RD930C – expanding the RD900 series

The new, long-piston RD930 rock drill is designed for efficient drilling of larger hole sizes:

- Longer piston with higher impact energy
- Longer impact pulse optimal for the hole size

Release more power with CT55 and CT67 drilling tools

“This is almost a jackpot drill string”

– Driller in Finland

- The unique and innovative curved thread systems CT55 and CT67, for surface mining and quarrying, are designed to handle higher drilling power compared to standard systems. The curved profile of the thread reduces stress levels in all the right places and every corner of the product is optimized for fatigue strength.
- High penetration rate
 - Good flushing
 - Good hole quality and straightness
 - Problem-free drilling
 - Easy coupling and un-coupling
 - Less tool breakages
 - Productivity enabler
 - Fuel savings and cost reductions

Proven performance
Productivity **+15%**
Fuel reduction **-15%** liter/meter
Service life **+30%**

Compared to standard systems

CT55 (new T51)

89–115 mm (3 ½” – 4 ½”)

- Shoulder driven system
- 70 mm flushing house – rock drills RD921, RD925, RD927

CT67 (new GT60)

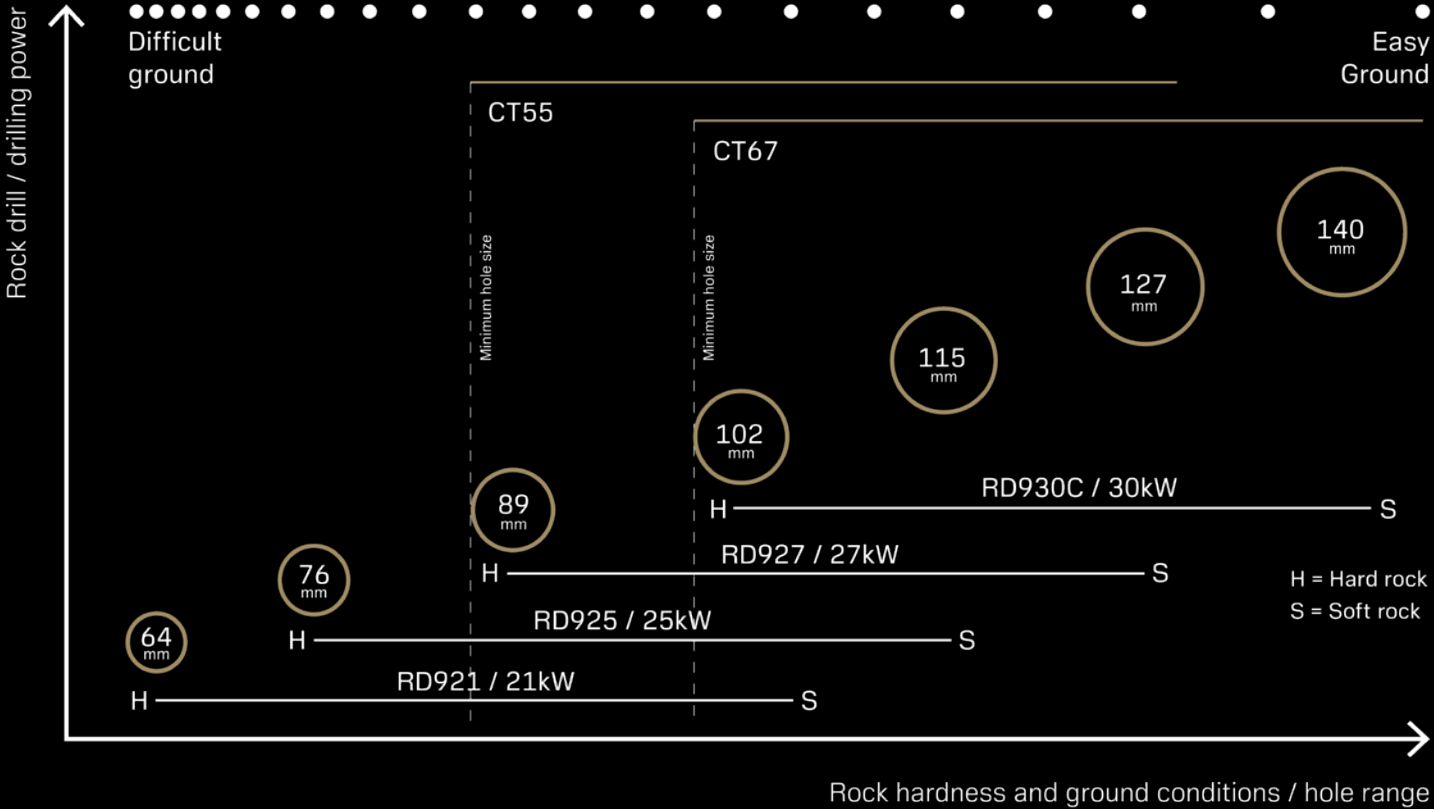
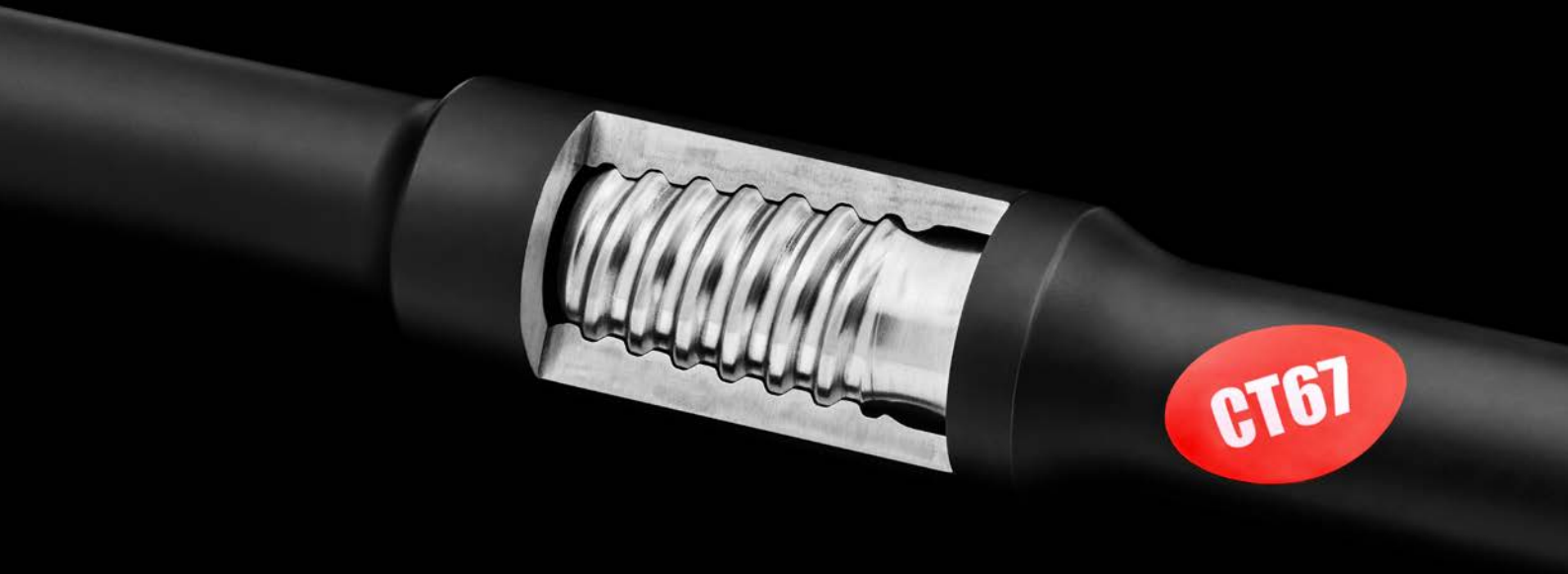
102–140mm (4”– 5 ½”)

- Shoulder driven system
- 70 mm flushing house – rock drills RD927, RD930

Rock tools CT55 and CT67

Improved drilling power calls for improved rock tools to take it. The completely redesigned, shoulder-driven system with curved thread can handle the stresses of high-power drilling, offering a superior penetration rate and flushing properties. The easy coupling and uncoupling speed up your work while the excellent durability means problem-free drilling. What’s more, the hole quality is improved with remarkable straightness.

Rock drills for all hole sizes
RD921 64–89 mm
RD925 89–115 mm
RD927 92–14 mm
RD930 115–152 mm



Features for smarter drilling

Efficient working is not just about power – it is about smart solutions.

We have turned our vast experience in surface drilling into intelligent features that will improve your drilling results.

iTorque drilling control system

- Provides best drilling result even in most difficult rock conditions
- Several selectable drilling recipes for different rock conditions

Full hole automatics (option)

- Drill hole automatically by using coupling and uncoupling automatics
- Automatic aligning and hole to hole navigation

Tim3D (option)

- Hole Navigation system (option): Fast and accurate drilling navigation and improved drilling result. Accuracy +/- 10 centimeters/4 inches. Surface model and drilling plan can be used concurrently.

- Driller's notes (option): Measurement-While-Drilling (MWD) option can collect data during drilling.
- Driller's office (option): Fast and easy drilling plan creation and MWD data analyzing.

RockPulse™ (option)

- Measure stress waves in real-time and analyze the effectiveness of your drilling
- Achieve optimal drilling results with lower tool consumption



Optional features & equipment

Automation

- Full cycle one hole automatic drilling
- Automatic feed alignment for TIMi
- Remote Screen

Drilling

- Full radio remote control for drilling, tramming, boom and rod handling control
- Power extractor
- Water injection system
- Thread greasing
- RockPulse™ sensor system
- Kit for alternative steels
- CSL-system for R92x series rock drill
- Dustmizer requires flap feeder

Hole navigation

- TIMi for inclined holes with TIM3D readiness
- TIM3D hole navigation system

Cabin

- Alternative seat with 3-point seat belt and air cushioning
- Reversing camera
- Roller blinds for cabin windows
- Heated mirrors
- Radio CD/MP3 Bluetooth, Handsfree, DAB
- Vacuum cleaner for cabin
- Explosion proof cabin window
- H13 Cabin filter, HEPA
- Additional tool/bit box below cabin
- Cooler Bag for Cabin

Feed system

- Horizontal drilling kit with extra break
- Long feed for 14' rods, CylF 18 HR

Carrier

- Electric fuel filling pump
- Central lubrication system
- Guides for grousers
- Hydraulic rear ground support
- Extra brake for turnable upper structure
- Cold-weather package -25degree
- Electric fuel filling pump
- Hydraulic winch with full radio drilling, tramming boom and rod handling
- Additional led lights 17 pcs
- CME Grinder
- Towing hook
- Electric hydraulic oil filling pump
- Electric water filling pump
- Flap feeder for dust collector

Technical features

Technical data	Ranger™ DX810i	Ranger™ DX910i
Hole diameter	64–127* mm (2.5"–5")	89–140** mm (3 ½"–5 ½")
Sandvik rock drill	RD925M, RD925M-C, RD921S, RD921S-C	RD927L, RD927L-C, RD930C
Percussion output power	25 kW, 21 kW (33.5 hp, 28 hp)	27 kW, 30 Kw (36 hp,40 hp)
Rock tools	38 mm, 45 mm and 51 mm (1½", 1¾" and 2")	51 mm and 60 mm (2" and 2 ⅜")
Drilling coverage	55 m² (592 ft²)	55 m² (592 ft²)
Engine type	Volvo TAD881VE (EU Stage V, Tier 4F) Volvo TAD851VE (Tier 3)	Volvo TAD882VE (EU Stage V, Tier 4F) Volvo TAD852VE (Tier 3)
Engine output	185 kW, 248 hp	210 kW, 282 hp
Cabin type	iCab	iCab
Control system type	Sandvik SICA, PLC-controlled proportional electrohydraulics	Sandvik SICA, PLC-controlled proportional electrohydraulics
Tramming/boom/drilling control	PLC controlled	PLC controlled
Flushing air	185 kW, 248 hp	9.5 m3/min, up to 10 bar, 335 cfm
Total weight	19 600 kg, 43 210 lb	19 600 kg, 43 210 lb
	*Please contact your Sandvik representative for hole needs larger than 115 millimeters.	**Please contact your Sandvik representative for hole needs larger than 127 millimeters.

Want to know more?



or contact your local Sandvik representative.