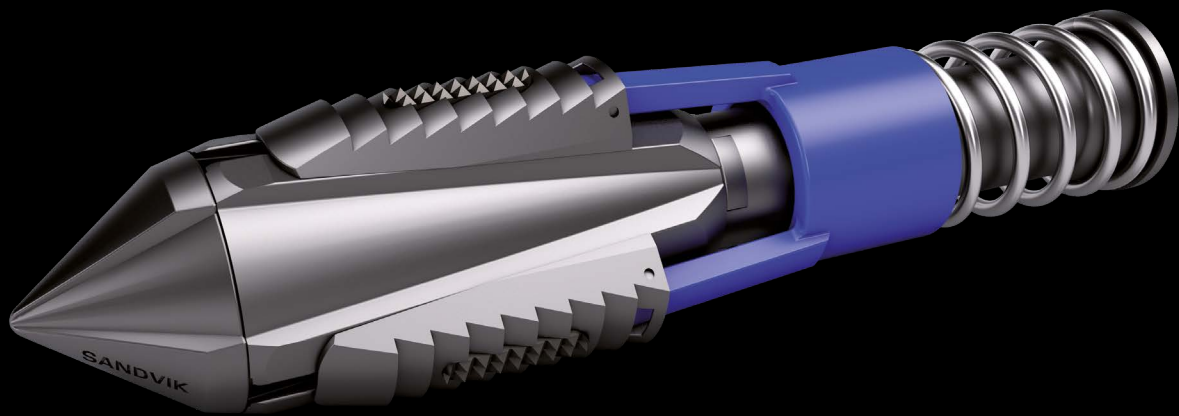


Fast Cable Anchor



Putting your safety first

The mining industry continues to demand even higher levels of safety and productivity. In order to meet these requirements, we work continuously to develop safer products, and to produce comprehensive manuals on the safe and effective use of our products.

It's all about everyone's health

Helping you to ensure a safer workplace and healthier workforce is of the utmost importance to us. The wellbeing of any person coming into contact with our equipment is paramount. Therefore, we strive to identify and assess potential risk factors that could threaten the health of you and your employees.

All products in this catalogue are designed to meet safety requirements.

Be aware of all safety procedures

We ask that you start by obeying all instructions given. Never work under an unsupported roof or close to potential pinch point locations. Beware of the potential hazards of a loose roof and side walls. Beware of possible rock burst. Scale down any loose rock from the roof and side walls prior to bolting. It is important to bolt early in the mining process – as soon as it is safely and practically possible.

Safe work procedures should incorporate inspection – before the machine operates, and also through regular monitoring based upon mining conditions, safety and hazard management systems. Workers should be provided with safety information, instruction and training on transportation, installation, operational care and disposal of drilling tools.

Dress right from head to toe

You must wear appropriate personal protective equipment (PPE) at all times. This is what we strongly recommend to help avoid injury:

- Safety helmet
- Hearing protection
- Safety glasses
- Protective, high visibility clothing
- Respiratory protection
- Safety boots
- Safety gloves
- Any site-specific PPE as required

Make a risk analysis before you start

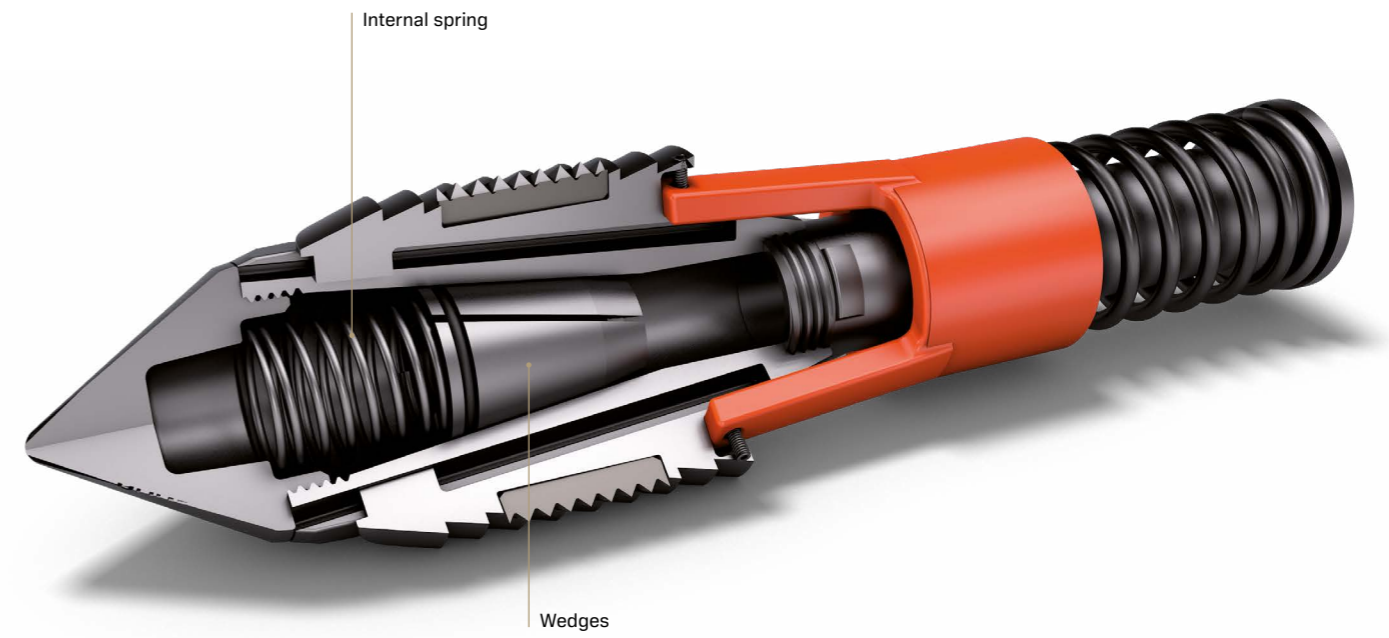
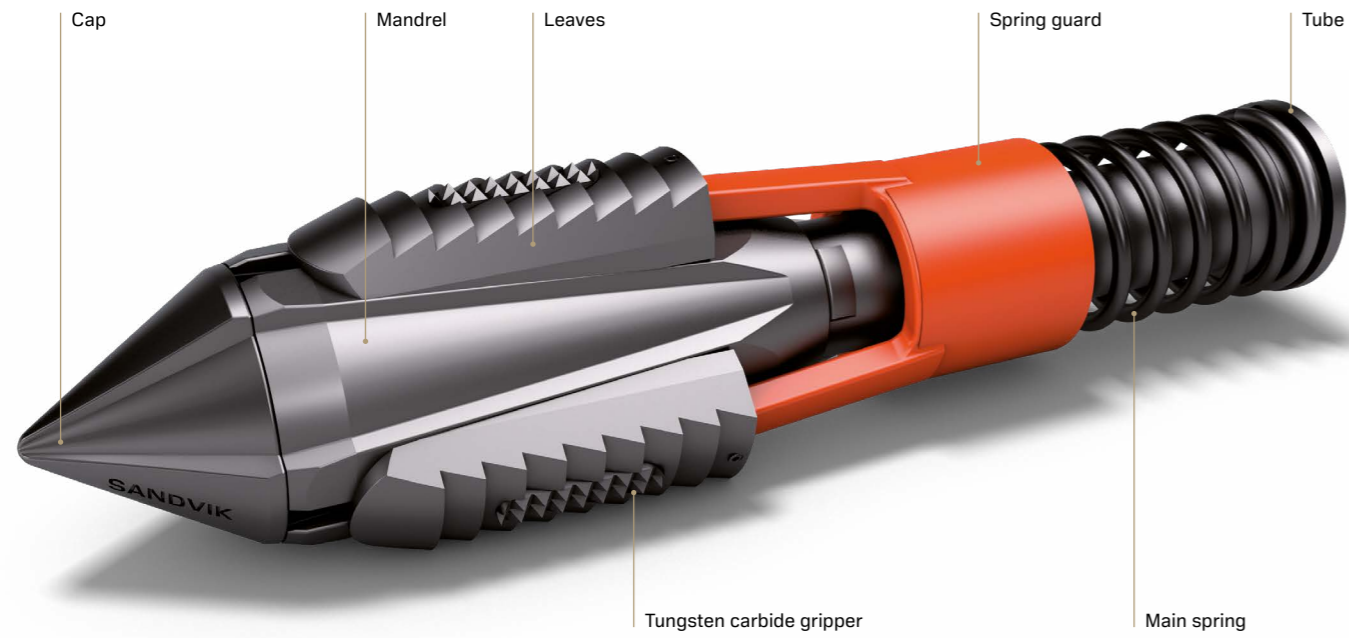
Pay attention to safety when planning all of your work. Before you start, always take the time to go through all operations. Identify any potential risks and take appropriate measures to avoid them.

If necessary, seek expert advice on how to help minimize risks. Finally, make sure that you have the right resources to perform all tasks in the safest manner possible.



The new Fast Cable Anchor

Rapid development now available for cable bolting thanks to innovative design





Fast Cable Anchor



Rapid development with the new Fast Cable Anchor, providing a new level of cable bolting in hard-rock mining. With its innovative design, mining productivity is significantly increased. Thanks to a tool-less connection to the cable, it enables the use of bulk cables, allowing for fast mechanical installation with Sandvik cable bolters. Even manual installation becomes more efficient, as every step of the bolting processes, from drilling to plating and tensioning, can be done directly in succession. There is no need to wait hours or even days for the grout to cure, as the tensioning can begin immediately after anchor insertion. The new Fast Cable Anchor also enhances safety in mining operations. The anchor engages securely with the rock wall of the borehole providing additional installation stability. During the installation process, the anchor will also push the grout in the smallest cavities and gaps.

Features

- Simplified & faster cable bolting process
- Can be used for pre-grouted or post grouted holes
- Cable anchor forces cavities/gaps to be filled with grout during installation
- Reduced preparation time with tool-free reliable connection of anchor and cable
- Anchor securely engages with the rock wall of the borehole
- Cable can be immediately tensioned to mine's requirements, or up to 100 kN
- Tensioning of the overall whole length of the cable and without damaging the grout
- One-step installation for handheld cable bolting
- Compatibility with bulk coiled cable allows fast mechanical installation with Sandvik cable bolters
- Applicable to plain strand cables and spirally indented cables

Part number	FCA15.2	FCA17.8
Length	237 mm	237 mm
Weight	1 kg	1 kg
Min. hole size	52 mm	52 mm
Max. hole size	58 mm	58 mm
Cable diameter	15.2 mm	17.8 mm
Cable type	7 wire plain strand cable or 7 wire spirally indented cable	7 wire plain strand cable or 7 wire spirally indented cable
Spring guard color	Orange	Blue

All dimensions, weights, quantities, and specifications are those applicable at the time of this publication and may be amended from time to time. Please contact your local representative for final confirmation of any key specifications.