

Cable LocBolt

Product code: Various Items

Product specification: Refer to the table below

Category: Cable bolt / Discrete

Introduction

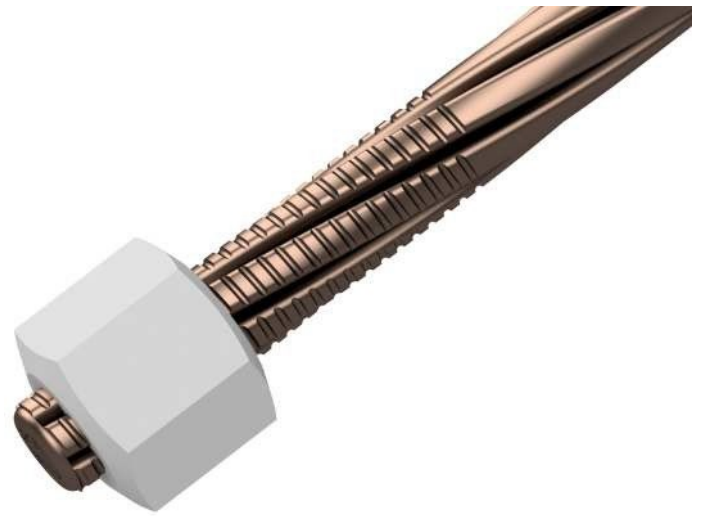
Cable LocBolts are threaded cable-based support anchors made from strong compact cable, used to stabilize rock in underground mining environments. Their flexible nature helps them adjust to varying ground conditions while still offering reliable load-bearing performance. With their durable construction and straightforward installation, Cable LocBolts support safer and more efficient mining operations.

Key features

- Made from high strength compact cable with precise threads.
- Flexible construction
- High load bearing performance
- Threaded cable to Din405 specification

Main advantages

- Suitable for a wide range of mining environments.
- Flexible design allows for angled installations.
- High performance in tensioning and load-bearing applications.
- Wide compatibility with various hole sizes and expansion shells.
- Strong bonding with grout or resin.



Technical specifications

Cable diameter ¹⁾	Rating	UTS cable	Expansion shell size for anchor	Socket
18 mm compact	79% cable UTS (30 ton)	379 kN	35, 38, 43+	On request

1) 15.24mm compact cable also available

Expansion shell minimum and maximum hole size

Expansion shell	Minimum hole size	Maximum hole size
35	35.5 mm	41 mm
38	38.5 mm	44 mm
43	43.5 mm	49 mm

Other options

Custom lengths: Available at various lengths to meet specific site requirements.
Optional accessories: Grouting pipes and breather tubes for improved application versatility.

Product range and accessories

Sockets and grouting equipment are available.

Safety procedures

Always follow relevant safety guidelines during installation and tensioning. Request product-specific safety documentation for detailed instructions.

Legal disclaimer

All dimensions, weights, quantities, and specifications are those applicable at the time of this publication and may be amended from time to time. Please contact your local representative for final confirmation of any key specifications.