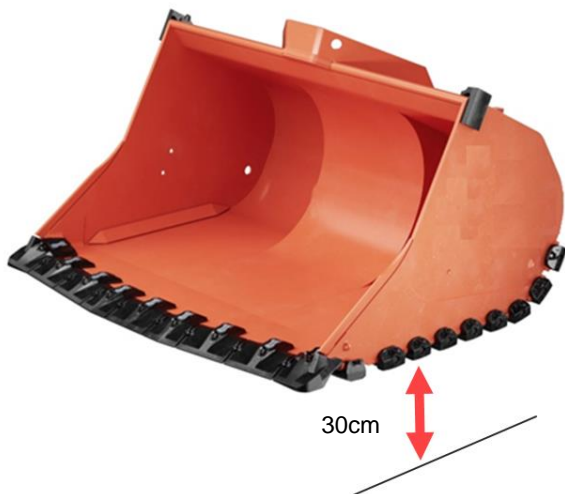


# MECHANICAL HEEL SHROUD REMOVAL PROCEDURE

SHARK™ GROUND ENGAGING TOOLS

Before starting the removal process ensure all heel shrouds are thoroughly washed and cleaned.

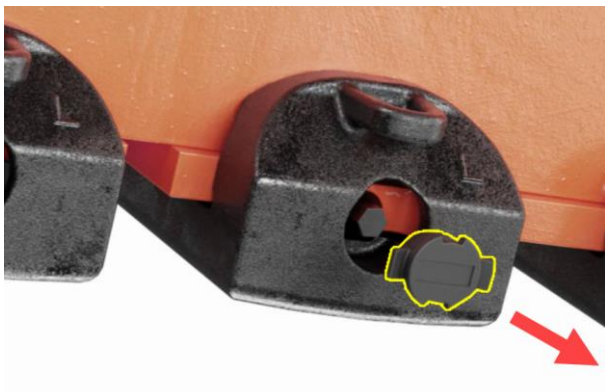


Raise the bucket 30cm above ground with proper support.

**Important:**

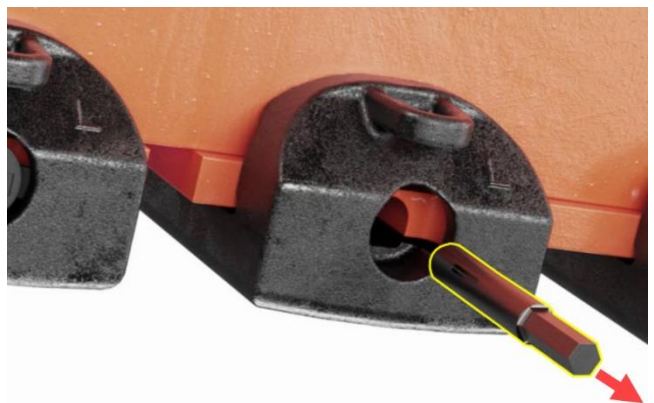
Ensure that the bucket is properly supported and balanced with a minimum of 3 stands (or similar supports) rated for the bucket load.

1



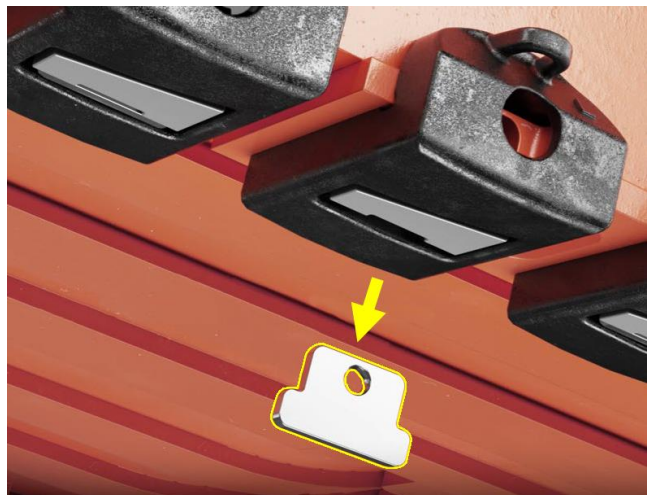
Remove bolt cap.

2



Turn the bolt counterclockwise until it is released.

3

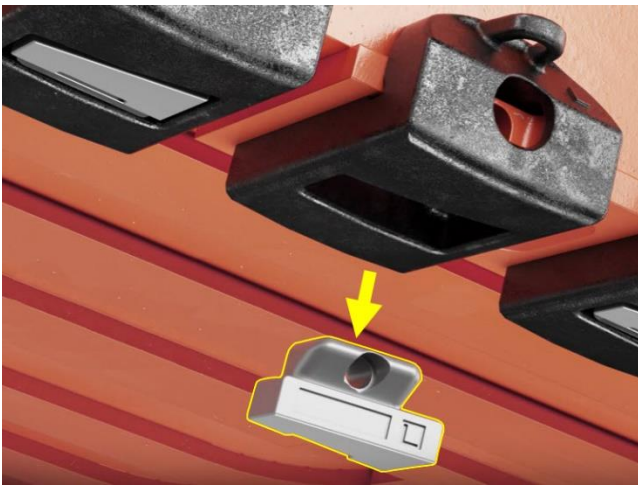


Remove the spacer from the shroud cavity.

# MECHANICAL HEEL SHROUD REMOVAL PROCEDURE

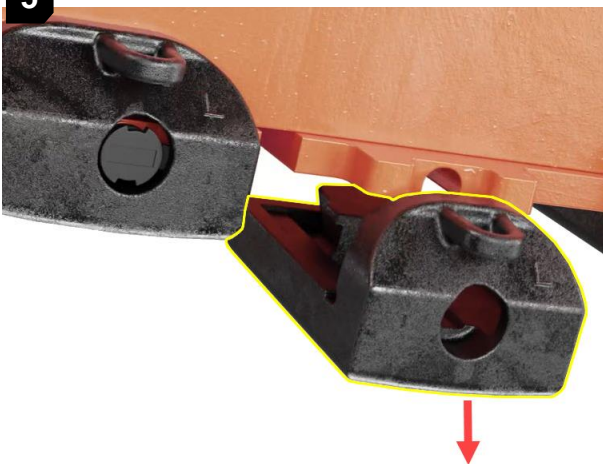
SHARK™ GROUND ENGAGING TOOLS

4



Push the nut away from you and remove the nut from the heel shroud cavity.

5



Ensure the shroud is supported and remove the heel shroud from the adapter plate.