



# DR412i

DEPENDABILITY DEFINED





## iSERIES FAMILY

The iSeries family of rotary blasthole drill rigs represents the next generation of surface drilling technology. Designed for the future, these automation capable drills are equipped to meet your needs today and in the future.

iSeries drill rigs simplify operation using automated functions while an intuitive user interface delivers a consistent operator experience across multiple drill models. The comprehensive Sandvik Intelligent Control System Architecture (SICA), a key component of our iSeries family, provides the operator with real-time feedback regarding the machine's performance and health, along with tools for drill planning, reporting and analysis ensuring quality and consistency hole-to-hole.



# THE DR412i

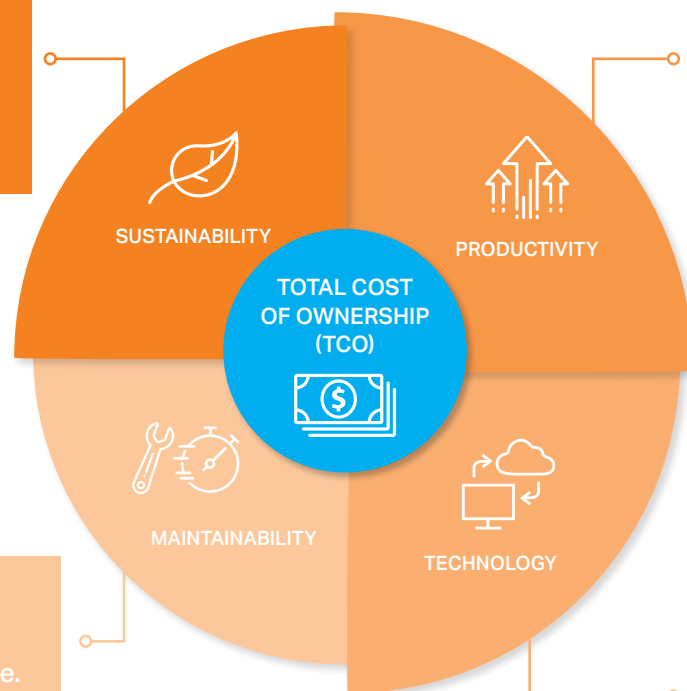
## DEPENDABILITY DEFINED

The DR412i blasthole drill is designed to deliver dependable penetration and return on investment for 8.5-12.25" (203-311 mm) rotary and DTH holes, with a first pass capability of 18.3 m or 60 ft and a maximum depth of 33.5 m or 110 ft for the single pass mast. The multi pass mast delivers a first pass depth of 12 meters or 39.5 ft with a maximum depth of 76 m or 245 ft. across all recommended pipe diameters.

The Sandvik DR412i is AutoMine® ready providing functionality for both on-board and off-board automated needs. This scalable solution, from on-board automation that increases drilling efficiency to full autonomous operation, is designed to meet customer needs both now and in the future.

The four key principles that led to the innovative design efforts that brought the DR412i to life are:

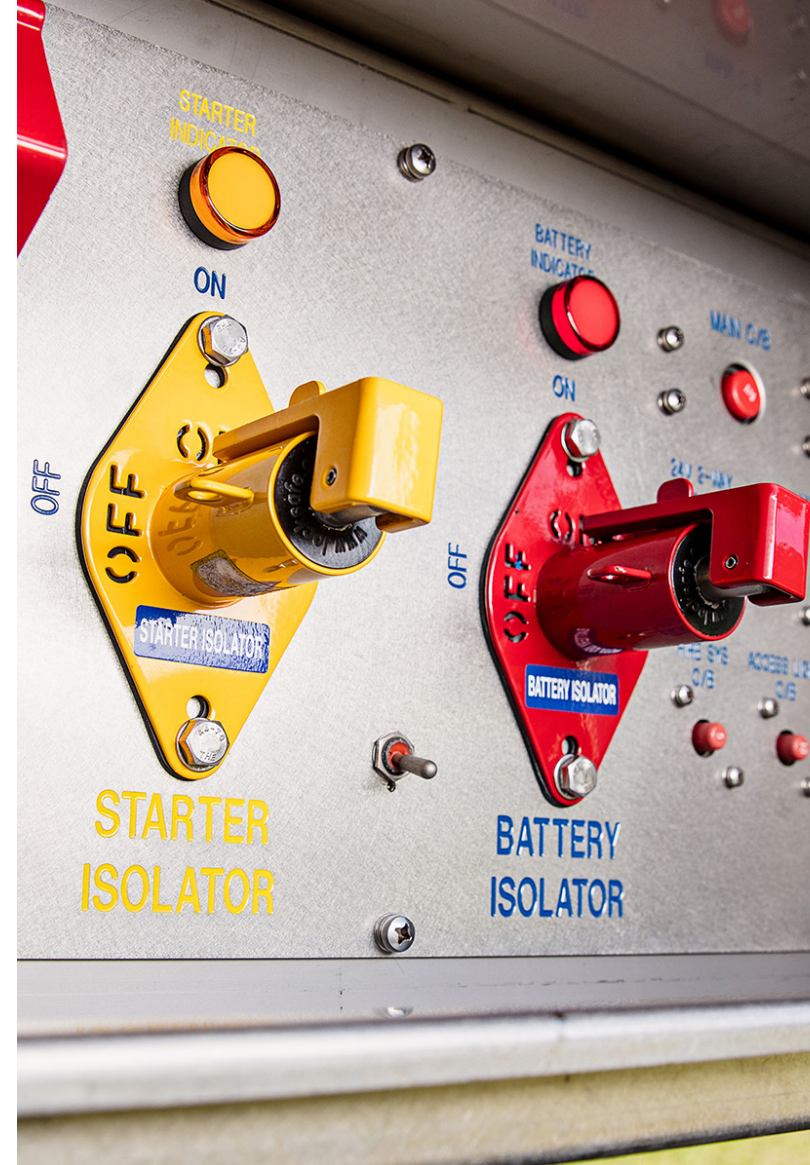
We work relentlessly in our operations to drive a sustainable, resilient business that supports our customer needs.



Advanced design and technology to help meet your production targets.

Reducing personnel-to-machine contact while maximizing component life.

Our iSeries units and off board technologies take the guesswork out of your daily operation.



# KEY PRODUCT FEATURES

- 01 DRILLING CAPABILITY**  
*Designed to perform to your specifications.*
- 203 to 311 millimeter (8.5 to 12.25 inch) Diameter Blastholes
  - Single-pass Capacity of 18 meters (59 feet)
  - Multi-pass Capacity of 75 meters (246 feet)

- 02 AUTOMATION**  
*Increasing productivity through automated features.*
- Hydraulic Auto-Levelling
  - Change Drill Bit without Operator Contact\*

- 03 OPERATOR ENVIRONMENT**  
*Ensuring comfort and safety are top priority.*
- Full Visibility of Drilling Operation
  - Ergonomically-Designed Shock Mounted Cab
  - Function Lockout Fail-safe Programming
  - Touchscreens for Ease of Operation

- 04 ACCESSIBILITY & MAINTENANCE**  
*Improving serviceability through ease-of-access.*
- 360-degree Catwalk System for Full Accessibility
  - Hydraulic Actuated Main-Access Stairway\*
  - In-Cab Maintenance Features
  - Open Design with Walkways for Safe, Easy Maintenance

- 05 COMPRESSOR MANAGEMENT**  
*Our solution to the inherent inefficiencies of blasthole drilling.*
- Reduces engine load and wear and tear on compressor and engine
  - Reduces Fuel Consumption
  - Extends Maintenance Intervals
  - Reduces Greenhouse Gas Emissions

- 06 CUSTOMIZATION**  
*Built with a wide range of needs in mind.*
- Custom builds available for conditions ranging from extreme cold to intense heat.

\*Denotes optional feature



# DR412i

01

90°

120°

135°

150°

02

05

03

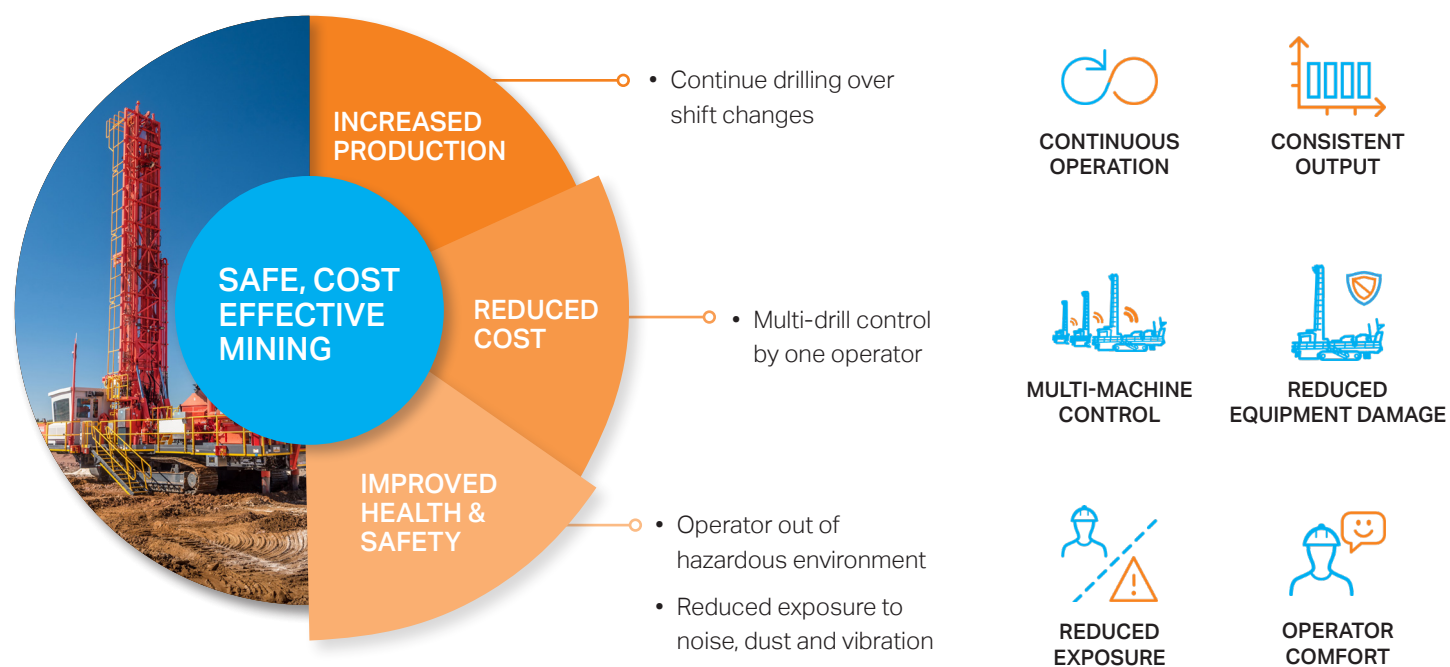
180°

04

06

# AUTOMINE® SURFACE DRILLING

AUTOMATION THAT SCALES WITH YOUR OPERATION



# SANDVIK AUTOMATION

Sandvik is a world leader in automation, implementing digital mining solutions for more than two decades. Sandvik's AutoMine® and OptiMine® solutions are working in more than 80 mines around the world.

The AutoMine® product family allows customers to scale up automation at their own pace. AutoMine® covers all aspects of automation, from remote and autonomous operation of a single piece of equipment, to multi-machine control and full-fleet automation. Combined AutoMine® installations have logged more than 3 million hours with zero Lost Time Injuries.

Our AutoMine® and OptiMine® systems are backed by Sandvik experts around the globe.

## AUTOMINE® SURFACE DRILLING OFFERING

### ONBOARD

Onboard Equipment Automation



Sandvik iSeries

### MULTI-LITE

Line-of-sight or Control Room Automation for 1-3 Machines



Unified Onboard Automation Package

### FLEET

Control Room Automation with Fleet Control



# MACHINE SPECIFICATIONS

## DR412i

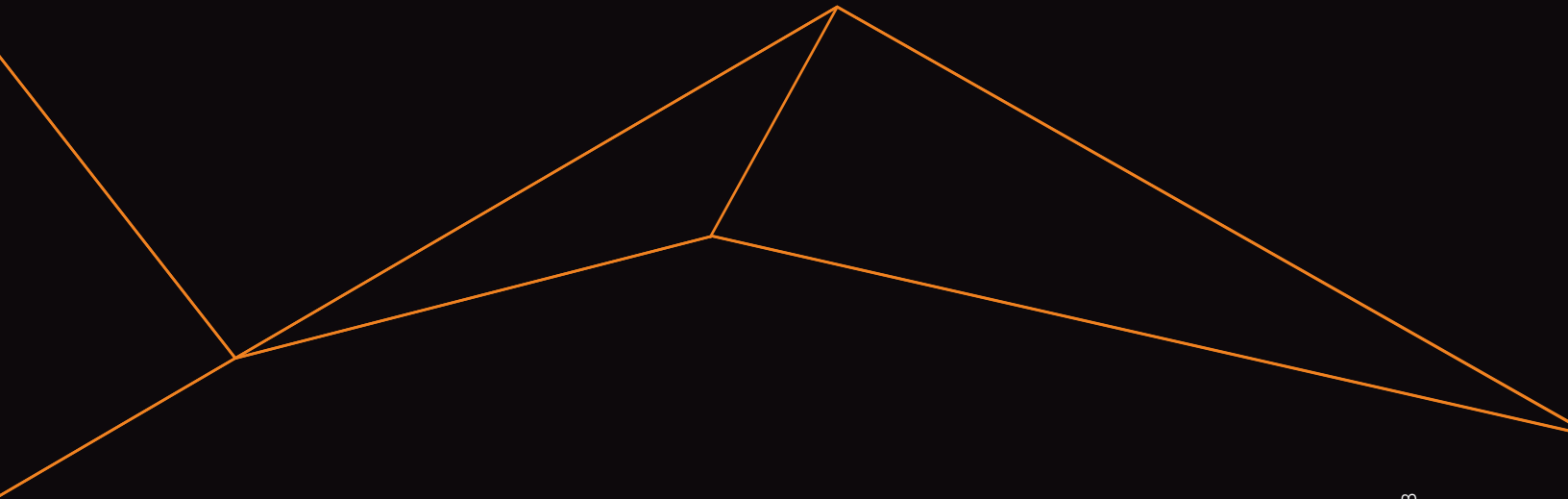
	METRIC	IMPERIAL
Hole diameter	203 - 311mm	8 1/2 - 12 1/4 in
Maximum hole depth - Standard Mast	75.5 m	247.7 ft
Maximum hole depth - Extended Mast	33.1 m	108.5 ft
First pass capability - Standard Mast	12 m	39.5 ft
First pass capability - Extended Mast	17.8 m	58.5 ft
<b>FEED</b>		
Maximum pulldown	356 kN	80,000 lbf
Weight on bit	407 kN	91,500 lbf
Feed rate up/down - Extended Mast	0 - 43.9 m/min	0 - 140 fpm
Feed rate up/down - Standard Mast	0 - 41.1 m/min	0 - 135 fpm
Feed rate down - Multi-pass	0 - 41.2 m/min	0 - 135 fpm
<b>ENGINE OPTIONS</b>		
Cummins QST 30 (Non Tier 4)	783 kW	1050 hp
CAT C27 (Non Tier 4/Tier 4)	708 kW	950 hp
<b>COMPRESSOR OPTIONS</b>		
Rotary Drilling	56.6 m <sup>3</sup> /min @ 6.9 bar	2000 SCFM @ 100 psi
Rotary Drilling (option)	76.6 m <sup>3</sup> /min @ 5.5 bar	2600 SCFM @ 80 psi
DTH Drilling	41 m <sup>3</sup> /min @ 24.1 bar	1450 SCFM @ 350 psi
<b>ROTATION</b>		
Power	193 kW	260 HP
Speed		150 rpm

\*Consult factory for options and alternate power group arrangements



“When they first started putting it together I really noticed all the availability for access to every area on the drill. With the walkways, and the placement of the walkways, there was a lot of thought put into being able to access those areas.”

– KEVIN WHITE, DRILL & BLAST SUPERVISOR, CORTEZ GOLD CORP



B2-1054ENG © Sandvik Mining and Rock Technology 2017  
Sandvik AutoMine and iSure are trademarks owned by Sandvik AB  
through Sandvik Intellectual Property AB and other subsidiaries.

